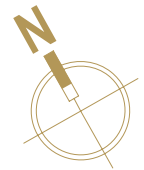




2 BEDROOM APARTMENT

KIDBROOKE SQUARE

| | | | | | | | |
|-------------------------|-----|------|------|------|------|------|------|
| APARTMENT NUMBER | 905 | 1005 | 1105 | 1205 | 1305 | 1405 | 1505 |
| LEVEL | 9 | 10 | 11 | 12 | 13 | 14 | 15 |



Living/Dining Room

6.37m x 3.39m
20'11" x 11'1"

Kitchen

3.30m x 1.75m
10'10" x 5'9"

Bedroom 1

4.19m x 4.10m
13'9" x 13'5"

Bedroom 2

4.56m x 2.92m
14'11" x 9'7"

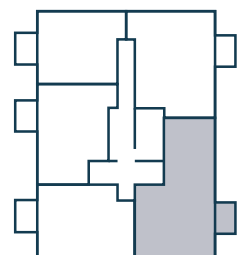
Balcony

3.15m x 1.91m
10'4" x 6'3"

Total Internal Area

80.5 sq m
866 sq ft

KEY: DW = Dishwasher, FF = Fridge Freezer, HIU = Heat Interface Unit, S = Store, W = Wardrobe, WD = Washer/Dryer, ♿ = Wheelchair adaptable apartment



The floorplans depict a typical layout of this apartment type. For exact plot specification, details of external and internal finishes, dimensions and floorplan differences, consult your Sales Executive. Any areas, measurements or distances quoted are approximate only and should not be used when ordering floor coverings or furnishings. Floorplans are not shown to scale.