

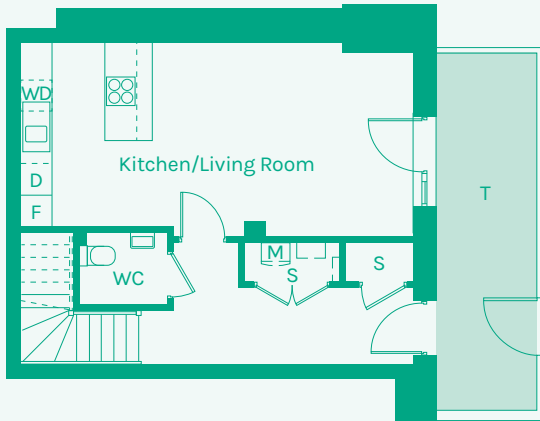


NEW GARDEN QUARTER

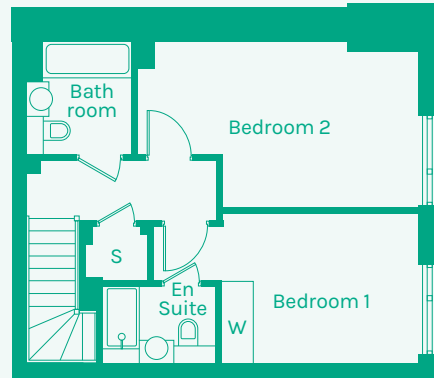
STRATFORD E15



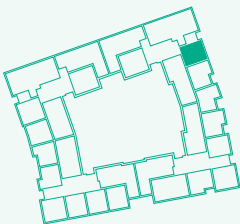
Ground floor



First floor



TYPE 02



Room	Metric	Imperial	Block	Floor	Plot
Kitchen/Living Room	7.39 x 3.69m	24'2" x 12'1"	B	G, 1	32
WC	1.67 x 1.38m	5'6" x 4'6"			
Hall	4.53 x 1.45m	14'10" x 4'9"			
Bathroom	2.02 x 2.14m	6'8" x 7'0"			
Bedroom 1	3.72 x 2.86m	12'2" x 9'4"			
Bedroom 2	5.32 x 3.14m	17'5" x 10'4"			
Ensuite	2.16 x 1.45m	7'1" x 4'9"			
GIA	90.33m²	972.30 sq ft			

- B // Balcony
- D // Dishwasher
- F // Fridge Freezer
- M // Mechanical Extract Ventilation Unit
- S // Storage
- T // Terrace
- W // Wardrobe
- WD // Washer / Dryer

These plans are to be used as a guide only to the apartment types available.

