

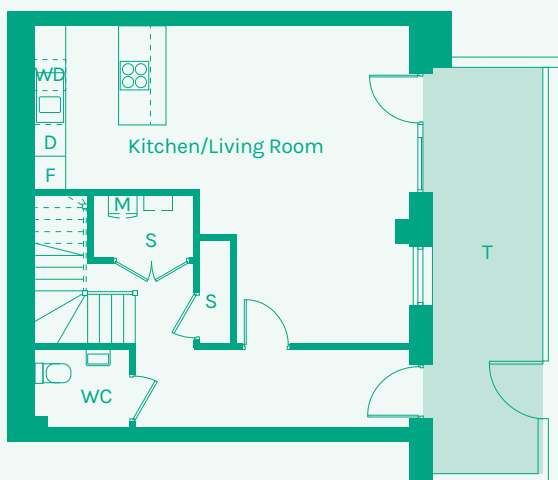


NEW GARDEN QUARTER

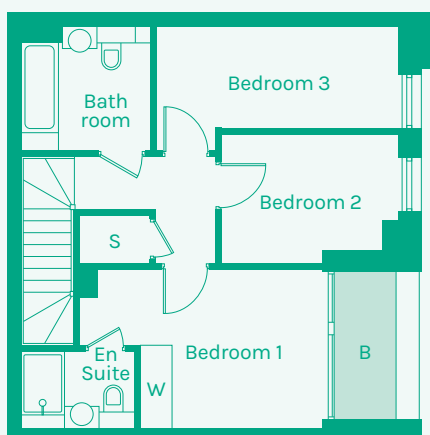
STRATFORD E15



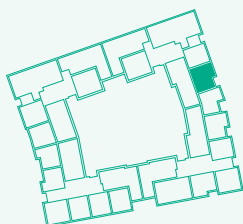
Ground floor



First floor



TYPE 03



Room	Metric	Imperial	Block	Floor	Plot
Kitchen/Living Room	7.02 x 6.03m	23'0" x 19'9"	B	G, 1	33
WC	1.82 x 1.45m	5'12" x 4'9"			
Hall	5.13 x 1.45m	16'10" x 4'9"			
Bathroom	2.46 x 2.31m	8'1" x 7'7"			
Bedroom 1	3.53 x 3.01m	11'7" x 9'11"			
Bedroom 2	3.34 x 2.47m	10'11" x 8'1"			
Bedroom 3	4.54 x 1.88m	14'11" x 6'2"			
Ensuite	2.14 x 1.45m	7'0" x 4'9"			
GIA	103.28m²	1111.69 sq ft			

- B // Balcony
- D // Dishwasher
- F // Fridge Freezer
- M // Mechanical Extract Ventilation Unit
- S // Storage
- T // Terrace
- W // Wardrobe
- WD // Washer / Dryer

These plans are to be used as a guide only to the apartment types available.

