

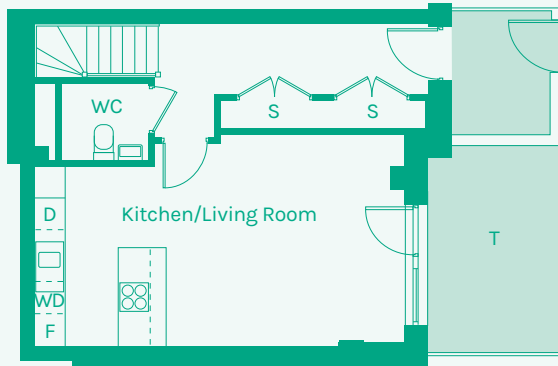


NEW GARDEN QUARTER

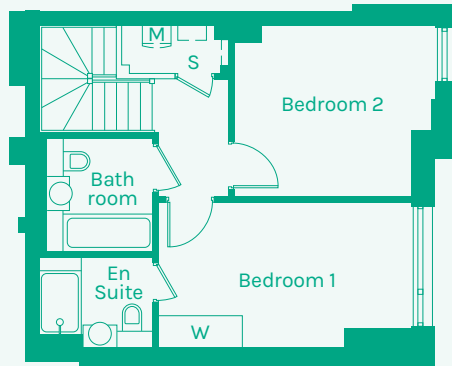
STRATFORD E15



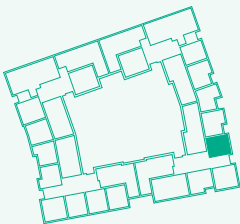
Ground floor



First floor



TYPE 04



Room	Metric	Imperial	Block	Floor	Plot
Kitchen/Living Room	7.01 x 4.03m	23'0" x 13'2"	C	G,1	60
WC	1.66 x 1.48m	5'5" x 4'10"			
Hall	5.11 x 1.33m	16'9" x 4'4"			
Bathroom	2.01 x 2.17m	6'7" x 7'1"			
Bedroom 1	4.81 x 2.75m	15'9" x 9'0"			
Bedroom 2	3.71 x 3.22m	12'2" x 10'7"			
Ensuite	2.15 x 1.73m	7'1" x 5'8"			
GIA	87.86m²	945.71 sq ft			

- B // Balcony
- D // Dishwasher
- F // Fridge Freezer
- M // Mechanical Extract Ventilation Unit
- S // Storage
- T // Terrace
- W // Wardrobe
- WD // Washer / Dryer

These plans are to be used as a guide only to the apartment types available.

