

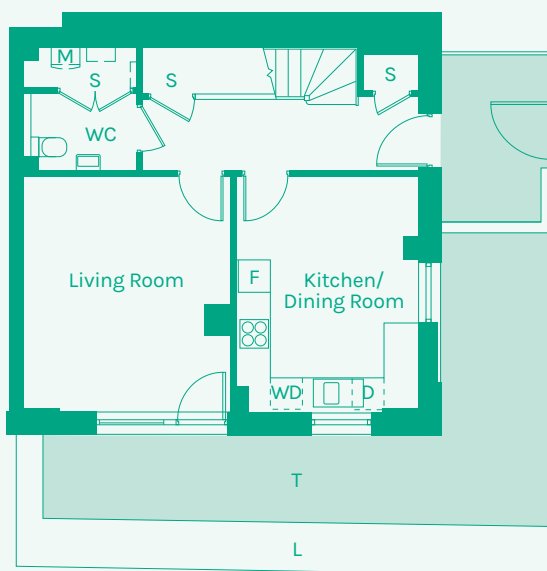


NEW GARDEN QUARTER

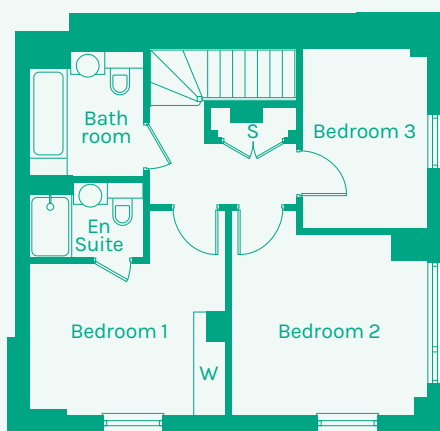
STRATFORD E15



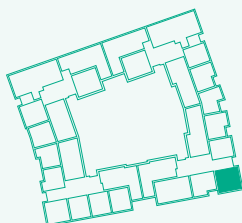
Ground floor



First floor



TYPE 05



Room	Metric	Imperial	Block	Floor	Plot
Kitchen/Dining Room	3.45 x 4.42m	11'4" x 14'6"	C	G, 1	61
Living Room	3.87 x 4.44m	12'8" x 14'7"			
WC	2.15 x 1.46m	7'1" x 4'9"			
Hall	5.22 x 1.37m	17'1" x 4'6"			
Bathroom	2.14 x 2.40m	7'0" x 7'10"			
Bedroom 1	3.73 x 2.90m	12'3" x 9'6"			
Bedroom 2	3.71 x 3.47m	12'2" x 11'5"			
Bedroom 3	2.34 x 3.37m	7'8" x 11'1"			
Ensuite	2.15 x 1.45m	7'1" x 4'9"			
GIA	103.41m²	1113.09 sq ft			

- B // Balcony
- F // Fridge Freezer
- M // Mechanical Extract Ventilation Unit
- T // Terrace
- D // Dishwasher
- L // Landscaped area
- S // Storage
- W // Wardrobe
- WD // Washer / Dryer

These plans are to be used as a guide only to the apartment types available.

