

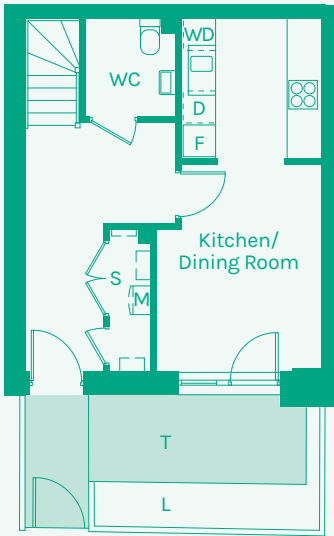


NEW GARDEN QUARTER

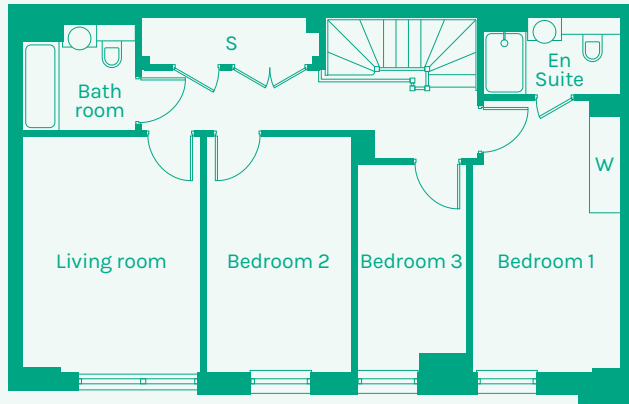
STRATFORD E15



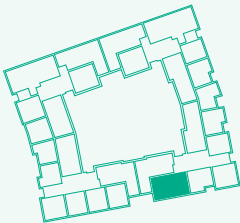
Ground floor



First floor



TYPE 07



Room	Metric	Imperial	Block	Floor	Plot
Kitchen/Dining Room	3.12 x 6.65m	10'3" x 21'10"	C	G,1	63
Living Room	3.27 x 4.45m	10'9" x 14'7"			
WC	1.72 x 1.87m	5'8" x 6'2"			
Hall	1.45 x 4.67m	4'9" x 15'4"			
Bathroom	2.15 x 2.02m	7'1" x 6'7"			
Bedroom 1	2.79 x 5.15m	9'2" x 16'11"			
Bedroom 2	2.75 x 4.45m	9'0" x 14'7"			
Bedroom 3	2.06 x 3.92m	6'9" x 12'10"			
Ensuite	2.59 x 1.45m	8'6" x 4'9"			
GIA	113.11m²	1217.50 sq ft			

- B // Balcony
- D // Dishwasher
- F // Fridge Freezer
- L // Landscaped area
- M // Mechanical Extract Ventilation Unit
- S // Storage
- T // Terrace
- W // Wardrobe
- WD // Washer / Dryer

These plans are to be used as a guide only to the apartment types available.

