

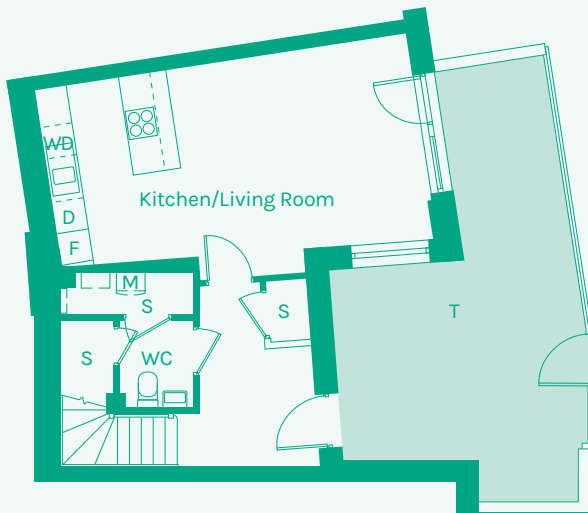


NEW GARDEN QUARTER

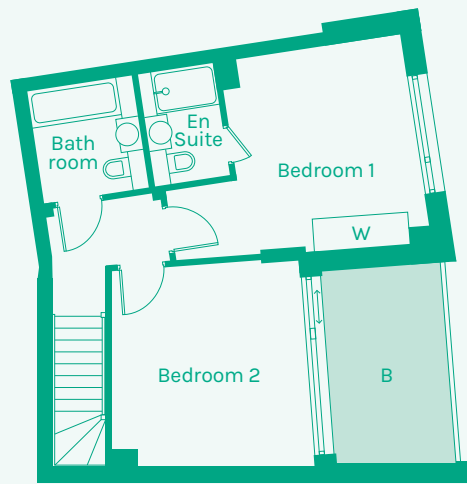
STRATFORD E15



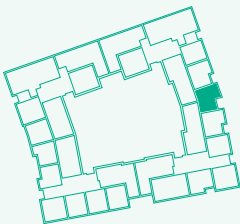
Ground floor



First floor



TYPE 08



Room	Metric	Imperial	Block	Floor	Plot
Kitchen/Living Room	7.09 x 4.11m	23'3" x 13'6"	C	G,1	64
WC	1.40 x 1.65m	4'7" x 5'5"			
Hall	2.16 x 3.40m	7'1" x 11'2"			
Bathroom	2.04 x 2.16m	6'8" x 7'1"			
Bedroom 1	3.47 x 3.80m	11'5" x 12'6"			
Bedroom 2	3.69 x 3.83m	12'1" x 12'7"			
Ensuite	1.45 x 2.15m	4'9" x 7'1"			
GIA	89.81m²	966.70 sq ft			

- B // Balcony
- D // Dishwasher
- F // Fridge Freezer
- M // Mechanical Extract Ventilation Unit
- S // Storage
- T // Terrace
- W // Wardrobe
- WD // Washer / Dryer

These plans are to be used as a guide only to the apartment types available.

