



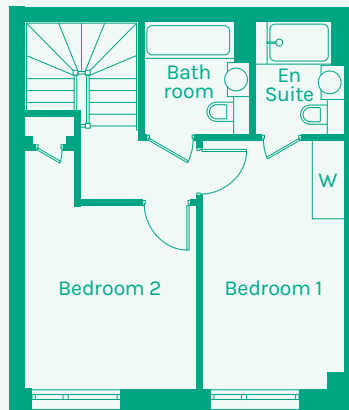
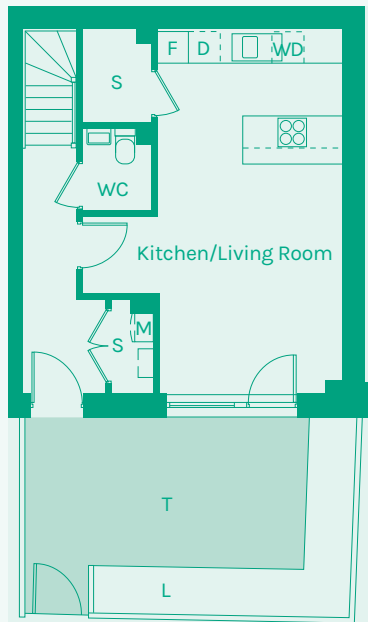
# NEW GARDEN QUARTER

STRATFORD E15

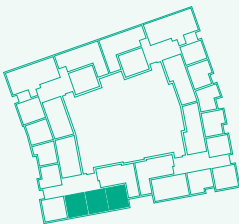


Ground floor

First floor



## TYPE 10



Room	Metric	Imperial	Block	Floor	Plot
Kitchen/Living Room	3.40 x 6.84m	11'2" x 22'5"	D	G,1	90
WC	1.34 x 1.52m	4'5" x 5'0"	D	G,1	91
Hall	1.02 x 4.69m	3'4" x 15'5"	D	G,1	92
Bathroom	2.01 x 2.13m	6'7" x 7'0"			
Bedroom 1	2.57 x 4.70m	8'5" x 15'5"			
Bedroom 2	3.22 x 3.44m	10'7" x 11'3"			
Ensuite	1.65 x 2.14m	5'5" x 7'0"			
<b>GIA</b>	<b>83.51m<sup>2</sup></b>	<b>898.89 sq ft</b>			

- B // Balcony
- D // Dishwasher
- F // Fridge Freezer
- L // Landscaped area
- M // Mechanical Extract Ventilation Unit
- S // Storage
- T // Terrace
- W // Wardrobe
- WD // Washer / Dryer

These plans are to be used as a guide only to the apartment types available.

