

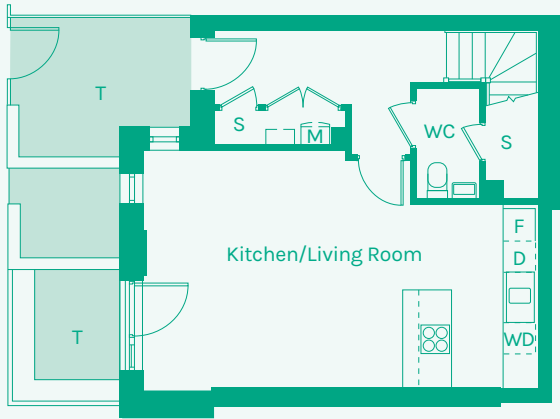


NEW GARDEN QUARTER

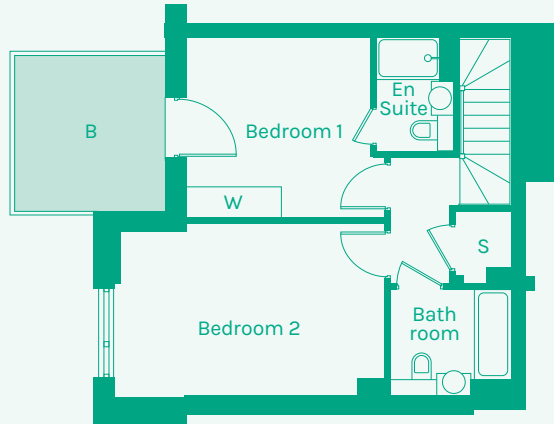
STRATFORD E15



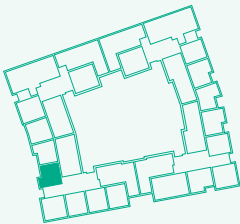
Ground floor



First floor



TYPE 12



Room	Metric	Imperial	Block	Floor	Plot
Kitchen/Living Room	7.44 x 4.48m	24'5" x 14'8"	D	G, 1	94
WC	1.18 x 2.09m	3'11" x 6'10"			
Hall	3.70 x 1.41m	12'2" x 4'7"			
Bathroom	2.30 x 1.99m	7'7" x 6'6"			
Bedroom 1	3.47 x 3.40m	11'5" x 11'2"			
Bedroom 2	5.12 x 3.25m	16'10" x 10'8"			
Ensuite	1.47 x 2.14m	4'10" x 7'0"			
GIA	93.45m²	1005.88 sq ft			

- B // Balcony
- D // Dishwasher
- F // Fridge Freezer
- M // Mechanical Extract Ventilation Unit
- S // Storage
- T // Terrace
- W // Wardrobe
- WD // Washer / Dryer

These plans are to be used as a guide only to the apartment types available.

