

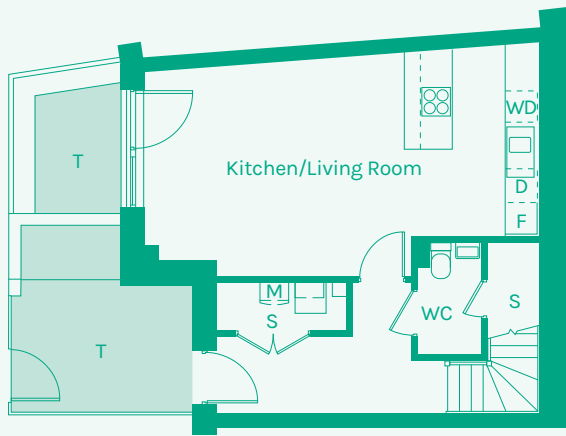


NEW GARDEN QUARTER

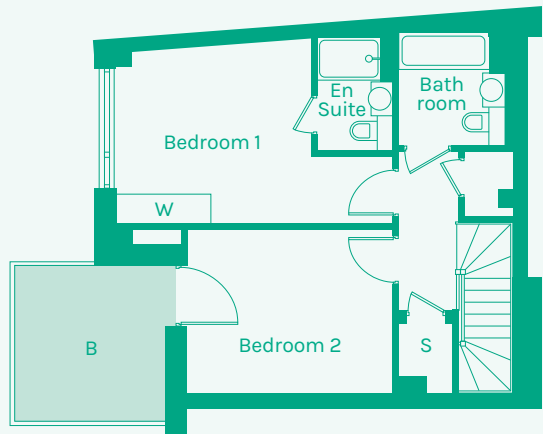
STRATFORD E15



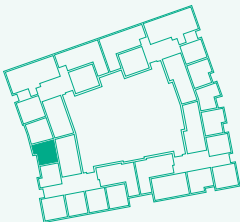
Ground floor



First floor



TYPE 13



Room	Metric	Imperial	Block	Floor	Plot
Kitchen/Living Room	7.42 x 4.09m	24'4" x 13'5"	D	G, 1	95
WC	1.22 x 2.14m	4'0" x 7'0"			
Hall	3.69 x 1.42m	12'1" x 4'8"			
Bathroom	2.01 x 2.15m	6'7" x 7'1"			
Bedroom 1	3.73 x 3.32m	12'3" x 10'11"			
Bedroom 2	3.92 x 3.08m	12'10" x 10'1"			
Ensuite	1.45 x 2.15m	4'9" x 7'1"			
GIA	92.99m²	1000.93 sq ft			

- B // Balcony
- D // Dishwasher
- F // Fridge Freezer
- M // Mechanical Extract Ventilation Unit
- S // Storage
- T // Terrace
- W // Wardrobe
- WD // Washer / Dryer

These plans are to be used as a guide only to the apartment types available.

