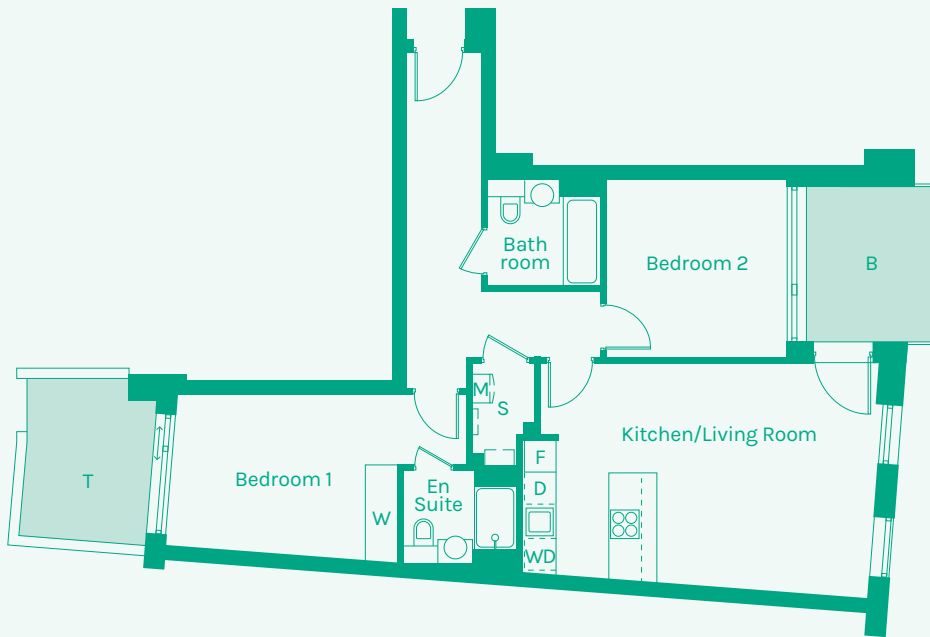


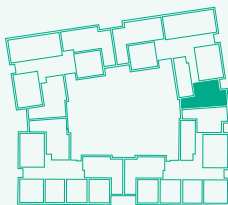


NEW GARDEN QUARTER

STRATFORD E15



TYPE 22



Room	Metric	Imperial	Block	Floor	Plot
Kitchen/Living Room	6.68 x 4.20m	22'11" x 13'9"	F	1	165 [†]
Hall	1.40 x 6.35m	4'7" x 20'10"	F	2	172
Bathroom	2.14 x 1.99m	7'0" x 6'6"	F	3	179
Bedroom 1	5.48 x 3.03m	18'0" x 9'11"	F	4	186
Bedroom 2	3.40 x 3.38m	11'2" x 11'1"	F	5	193
Ensuite	2.14 x 1.68m	7'0" x 5'6"			
GIA	78.20m²	842 sq ft			

- B // Balcony
- D // Dishwasher
- F // Fridge Freezer
- M // Mechanical Extract Ventilation Unit
- S // Storage
- T // Terrace[†]
- W // Wardrobe
- WD // Washer / Dryer



These plans are to be used as a guide only to the apartment types available.