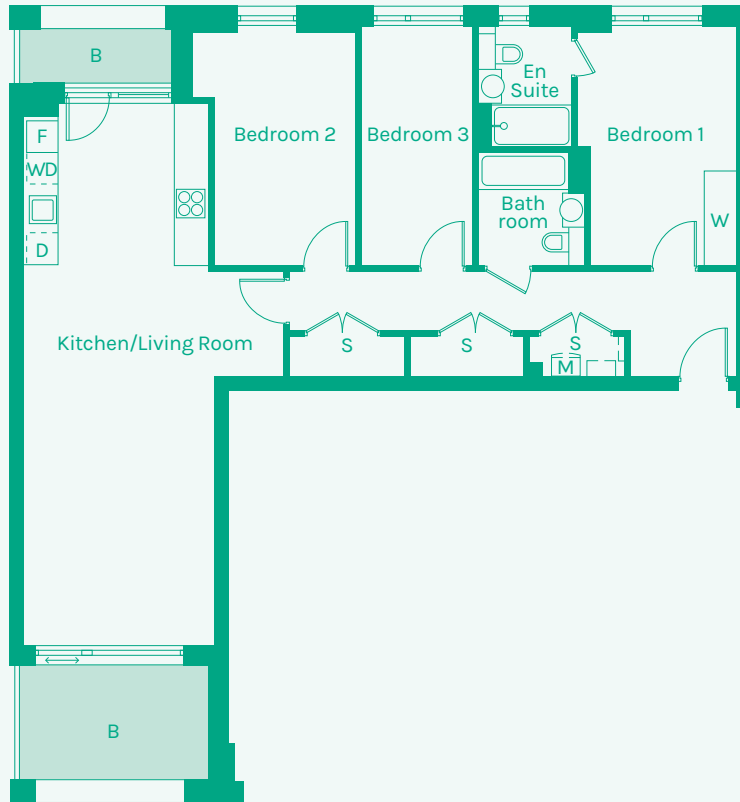


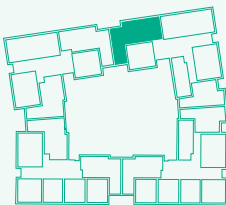


NEW GARDEN QUARTER

STRATFORD E15



TYPE 17



Room	Metric	Imperial	Block	Floor	Plot
Kitchen/Living Room	3.58 x 10.19m	11'9" x 33'5"	F	2	168
Hall	8.40 x 1.13m	27'7" x 3'9"	F	3	175
Bathroom	1.98 x 2.13m	6'6" x 7'0"	F	4	182
Bedroom 1	3.00 x 4.43m	9'10" x 14'6"	F	5	189
Bedroom 2	2.67 x 4.43m	8'9" x 14'6"			
Bedroom 3	2.10 x 4.50m	6'11" x 14'9"			
Ensuite	1.72 x 2.18m	5'8" x 7'2"			
GIA	102.50m²	1103 sq ft			

- B // Balcony
- D // Dishwasher
- F // Fridge Freezer
- M // Mechanical Extract Ventilation Unit
- S // Storage
- T // Terrace
- W // Wardrobe
- WD // Washer / Dryer



These plans are to be used as a guide only to the apartment types available.