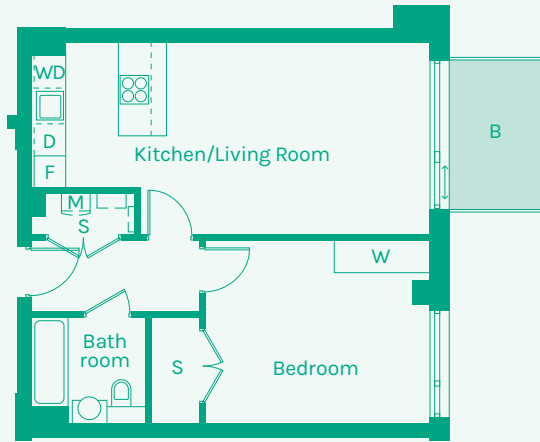
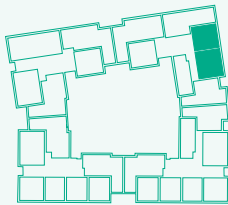




NEW GARDEN QUARTER
STRATFORD E15



TYPE 26



Room	Metric	Imperial	Block	Floor	Plot
Kitchen/Living Room	7.48 x 3.63m	24'7" x 11'11"	F	2	170, 171*
Hall	3.16 x 1.34m	10'4" x 4'5"	F	3	177, 178*
Bathroom	2.12 x 2.00m	7'0" x 6'7"	F	4	184, 185*
Bedroom	4.24 x 3.44m	13'11" x 11'3"	F	5	191, 192*
GIA	54.10m²	582 sq ft			

- B // Balcony
- D // Dishwasher
- F // Fridge Freezer
- M // Mechanical Extract Ventilation Unit
- S // Storage
- T // Terrace
- W // Wardrobe
- WD // Washer / Dryer
- * // Handed plot

These plans are to be used as a guide only to the apartment types available.

