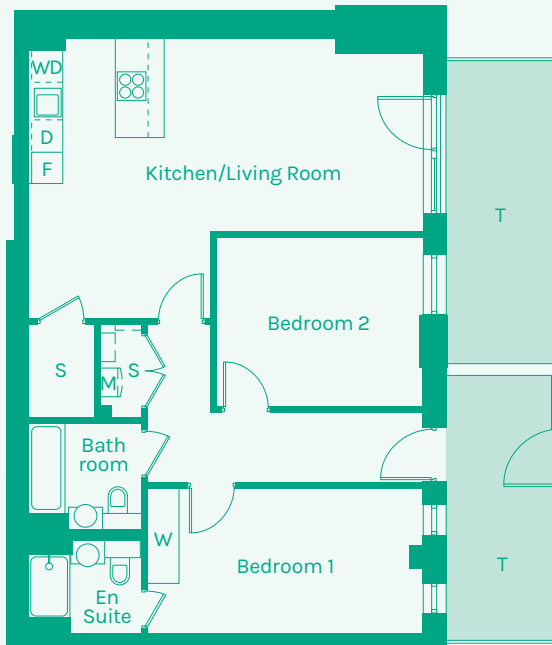
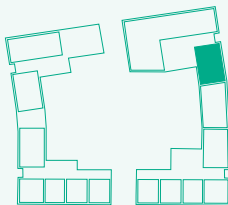




NEW GARDEN QUARTER
STRATFORD E15



TYPE 14



Room	Metric	Imperial
Kitchen/Living Room	7.45 x 5.27m	24'5" x 17'4"
Hall	5.26 x 3.02m	17'3" x 9'11"
Bathroom	2.07 x 2.00m	6'10" x 6'7"
Bedroom 1	5.21 x 2.75m	17'1" x 9'0"
Bedroom 2	3.95 x 3.22m	12'11" x 10'7"
Ensuite	2.10 x 1.74m	6'11" x 5'9"
GIA	84.00m²	904 sq ft

Block	Floor	Plot
F	G	160

- B // Balcony
- D // Dishwasher
- F // Fridge Freezer
- M // Mechanical Extract Ventilation Unit
- S // Storage
- T // Terrace
- W // Wardrobe
- WD // Washer / Dryer

These plans are to be used as a guide only to the apartment types available.

