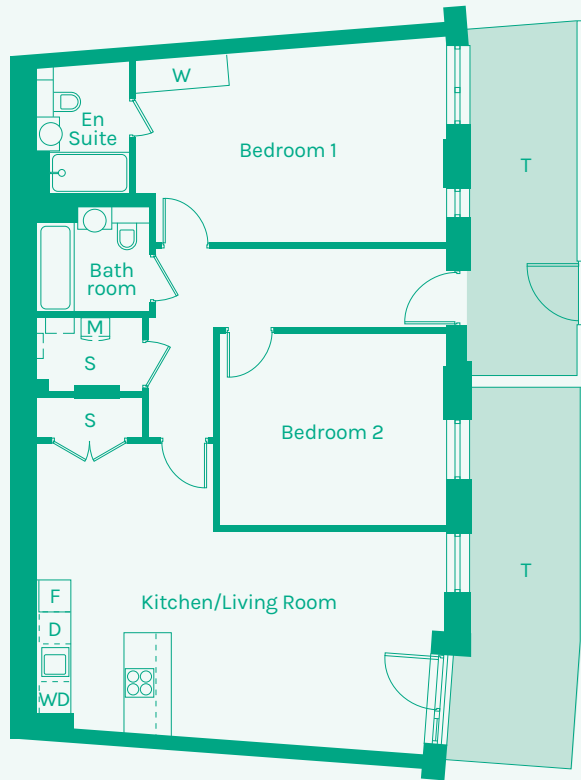
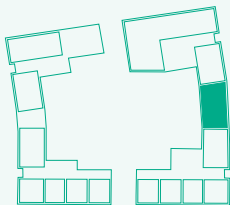




NEW GARDEN QUARTER
STRATFORD E15



TYPE 15



Room	Metric	Imperial
Kitchen/Living Room	7.66 x 4.04m	25'32" x 13'3"
Hall	5.45 x 1.50m	17'11" x 4'11"
Bathroom	2.13 x 2.00m	7'0" x 6'7"
Bedroom 1	5.75 x 3.66m	18'10" x 12'0"
Bedroom 2	4.26 x 3.62m	14'0" x 11'11"
Ensuite	1.76 x 2.37m	5'9" x 7'9"
GIA	84.00m²	904 sq ft

Block	Floor	Plot
F	G	161

- B // Balcony
- D // Dishwasher
- F // Fridge Freezer
- M // Mechanical Extract Ventilation Unit
- S // Storage
- T // Terrace
- W // Wardrobe
- WD // Washer / Dryer

These plans are to be used as a guide only to the apartment types available.

