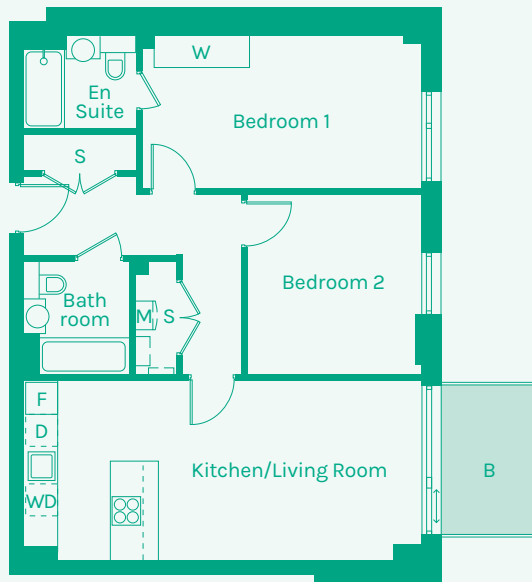


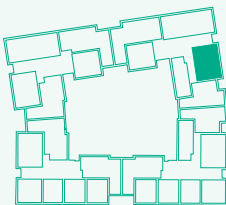


# NEW GARDEN QUARTER

STRATFORD E15



## TYPE 21



Room	Metric	Imperial	Block	Floor	Plot
Kitchen/Living Room	7.50 x 3.40m	24'7" x 11'2"	F	1	164
Hall	4.09 x 3.35m	13'5" x 11'0"			
Bathroom	1.99 x 2.13m	6'6" x 7'0"			
Bedroom 1	5.24 x 2.89m	17'2" x 9'6"			
Bedroom 2	3.30 x 3.35m	10'10" x 11'0"			
Ensuite	2.13 x 1.70m	7'0" x 5'7"			
<b>GIA</b>	<b>74.30m<sup>2</sup></b>	<b>800 sq ft</b>			

- B // Balcony
- D // Dishwasher
- F // Fridge Freezer
- M // Mechanical Extract Ventilation Unit
- S // Storage
- T // Terrace
- W // Wardrobe
- WD // Washer / Dryer

These plans are to be used as a guide only to the apartment types available.

