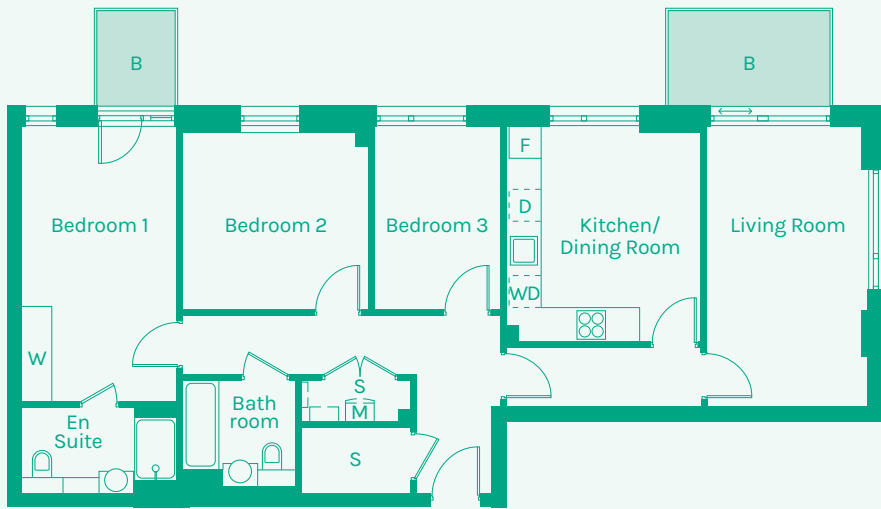


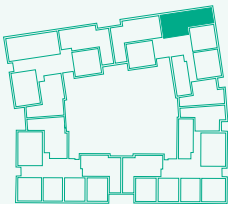


NEW GARDEN QUARTER

STRATFORD E15



TYPE 19



Room	Metric	Imperial	Block	Floor	Plot
Kitchen/Dining Room	3.71 x 4.05m	12'2" x 13'3"	F	2	169
Living Room	2.87 x 5.28m	9'5" x 17'4"	F	3	176
Hall	9.85 x 3.37m	32'4" x 11'1"			
Bathroom	2.14 x 2.00m	7'0" x 6'7"			
Bedroom 1	2.94 x 5.14m	9'8" x 16'10"			
Bedroom 2	3.53 x 3.32m	11'7" x 10'11"			
Bedroom 3	2.40 x 3.45m	7'11" x 11'4"			
Ensuite	2.94 x 1.64m	9'8" x 5'5"			
GIA	99.40m²	1070 sq ft			

- B // Balcony
- D // Dishwasher
- F // Fridge Freezer
- M // Mechanical Extract Ventilation Unit
- S // Storage
- T // Terrace
- W // Wardrobe
- WD // Washer / Dryer



These plans are to be used as a guide only to the apartment types available.