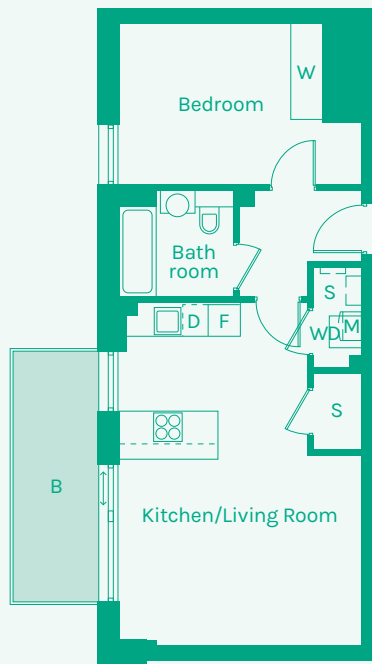
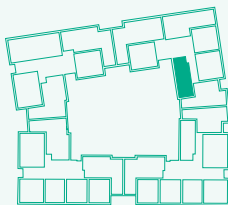




NEW GARDEN QUARTER
STRATFORD E15



TYPE 24



Room	Metric	Imperial	Block	Floor	Plot
Kitchen/Living Room	4.58 x 6.49m	15'0" x 21'4"	F	2	173
Hall	2.31 x 1.99m	7'7" x 6'6"	F	3	180
Bathroom	2.17 x 1.99m	7'1" x 6'6"			
Bedroom 1	4.59 x 3.04m	15'1" x 10'0"			
GIA	52.50m²	565 sq ft			

- B // Balcony
- D // Dishwasher
- F // Fridge Freezer
- M // Mechanical Extract Ventilation Unit
- S // Storage
- T // Terrace
- W // Wardrobe
- WD // Washer / Dryer

These plans are to be used as a guide only to the apartment types available.

