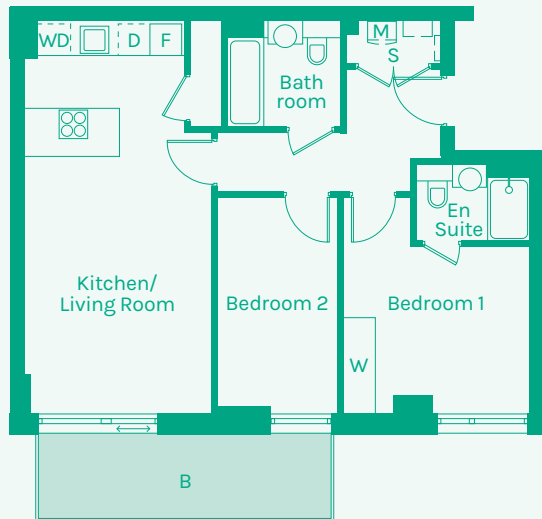


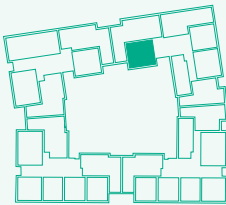


NEW GARDEN QUARTER

STRATFORD E15



TYPE 25



Room	Metric	Imperial	Block	Floor	Plot
Kitchen/Living Room	3.57 x 7.40m	11'8" x 24'3"	F	2	174
Hall	4.18 x 1.11m	13'9" x 3'8"	F	3	181
Bathroom	2.13 x 2.01m	7'0" x 6'7"	F	4	188
Bedroom 1	3.45 x 3.10m	11'4" x 10'2"	F	5	195
Bedroom 2	2.27 x 4.06m	7'5" x 13'4"			
Ensuite	2.11 x 1.44m	6'11" x 4'9"			
GIA	66.20m²	713 sq ft			

- B // Balcony
- D // Dishwasher
- F // Fridge Freezer
- M // Mechanical Extract Ventilation Unit
- S // Storage
- T // Terrace
- W // Wardrobe
- WD // Washer / Dryer

These plans are to be used as a guide only to the apartment types available.

