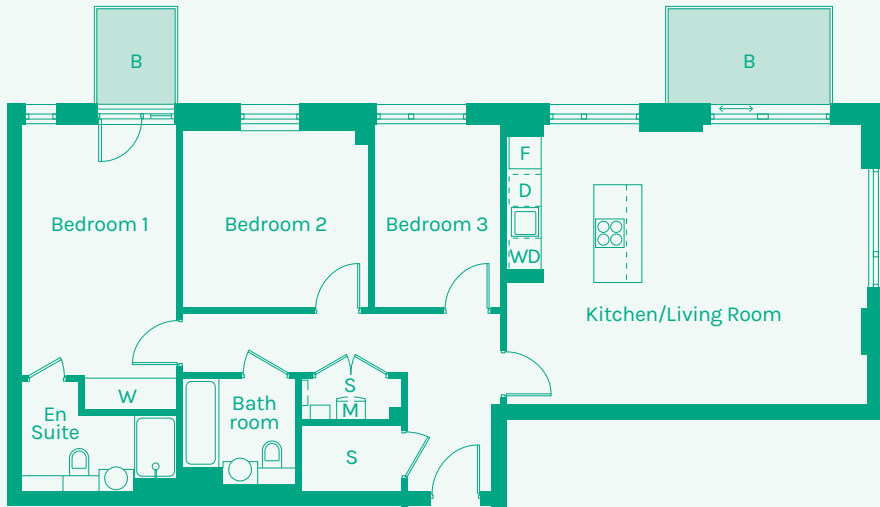


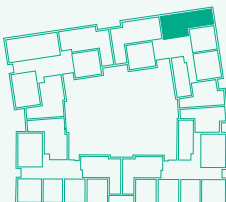


NEW GARDEN QUARTER

STRATFORD E15



TYPE 20



Room	Metric	Imperial	Block	Floor	Plot
Kitchen/Living Room	6.83 x 5.24m	22'5" x 17'2"	F	4	183
Hall	6.02 x 3.38m	19'9" x 11'1"	F	5	190
Bathroom	2.13 x 2.00m	7'0" x 6'7"			
Bedroom 1	2.93 x 4.68m	9'7" x 15'4"			
Bedroom 2	3.52 x 3.32m	11'7" x 10'11"			
Bedroom 3	2.39 x 3.44m	7'10" x 11'3"			
Ensuite	2.93 x 2.10m	9'7" x 6'11"			
GIA	99.40m²	1070 sq ft			

- B // Balcony
- D // Dishwasher
- F // Fridge Freezer
- M // Mechanical Extract Ventilation Unit
- S // Storage
- T // Terrace
- W // Wardrobe
- WD // Washer / Dryer



These plans are to be used as a guide only to the apartment types available.