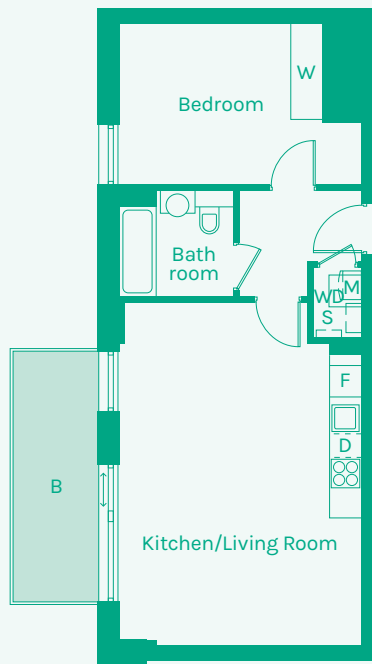
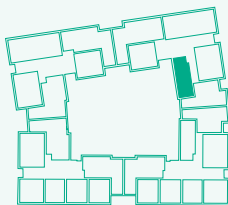




**NEW GARDEN QUARTER**  
STRATFORD E15



**TYPE 31**



Room	Metric	Imperial	Block	Floor	Plot
Kitchen/Living Room	4.55 x 6.43m	14'11" x 21'1"	F	4	187
Hall	2.28 x 2.02m	7'6" x 6'8"	F	5	194
Bathroom	2.16 x 2.01m	7'1" x 6'7"			
Bedroom 1	4.57 x 3.05m	15'0" x 10'0"			
<b>GIA</b>	<b>52.50m<sup>2</sup></b>	<b>565 sq ft</b>			

- B // Balcony
- D // Dishwasher
- F // Fridge Freezer
- M // Mechanical Extract Ventilation Unit
- S // Storage
- T // Terrace
- W // Wardrobe
- WD // Washer / Dryer

These plans are to be used as a guide only to the apartment types available.

