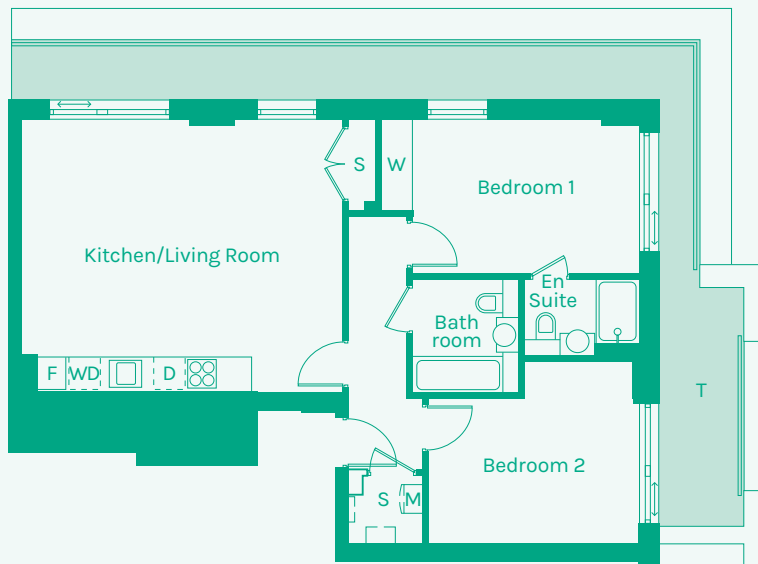


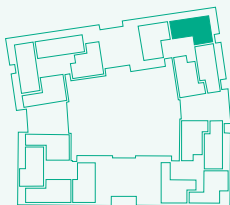


NEW GARDEN QUARTER

STRATFORD E15



TYPE 28



Room	Metric	Imperial	Block	Floor	Plot
Kitchen/Living Room	6.03 x 5.20m	19'9" x 17'1"	F	6	197
Hall	1.13 x 4.79m	3'9" x 15'9"			
Bathroom	1.99 x 2.14m	6'6" x 7'0"			
Bedroom 1	4.24 x 3.01m	13'11" x 9'11"			
Bedroom 2	3.98 x 2.70m	13'1" x 8'10"			
Ensuite	2.12 x 1.43m	7'0" x 4'8"			
GIA	76.53m²	824 sq ft			

- B // Balcony
- D // Dishwasher
- F // Fridge Freezer
- M // Mechanical Extract Ventilation Unit
- S // Storage
- T // Terrace**
- W // Wardrobe
- WD // Washer / Dryer



These plans are to be used as a guide only to the apartment types available.