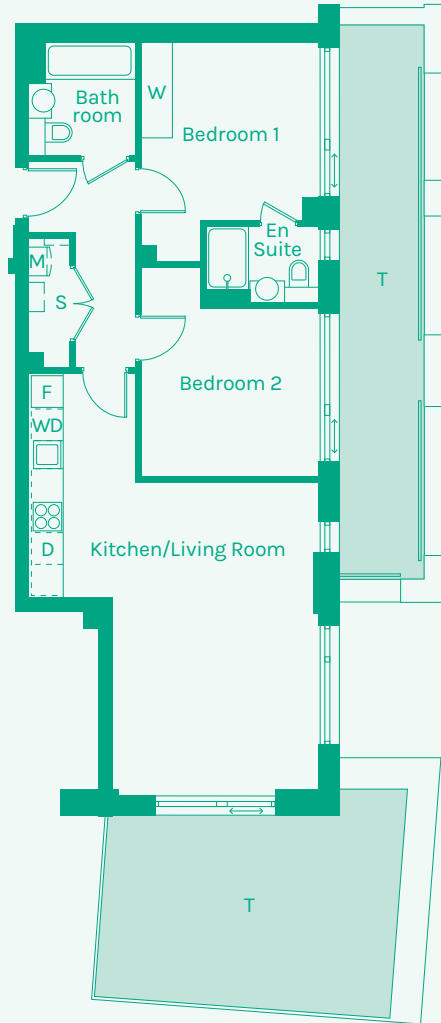


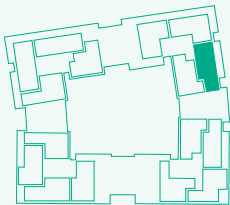


NEW GARDEN QUARTER

STRATFORD E15



TYPE 29



Room	Metric	Imperial	Block	Floor	Plot
Kitchen/Living Room	5.89 x 3.88m	19'4" x 12'9"	F	6	198
Hall	3.89 x 1.12m	12'9" x 3'8"			
Bathroom	2.14 x 2.00m	7'0" x 6'7"			
Bedroom 1	3.35 x 3.36m	11'0" x 11'0"			
Bedroom 2	3.19 x 3.36m	10'6" x 11'0"			
Ensuite	1.44 x 2.13m	4'9" x 7'0"			
GIA	72.16m²	777 sq ft			

- B // Balcony
- D // Dishwasher
- F // Fridge Freezer
- M // Mechanical Extract Ventilation Unit
- S // Storage
- T // Terrace
- W // Wardrobe
- WD // Washer / Dryer

These plans are to be used as a guide only to the apartment types available.

