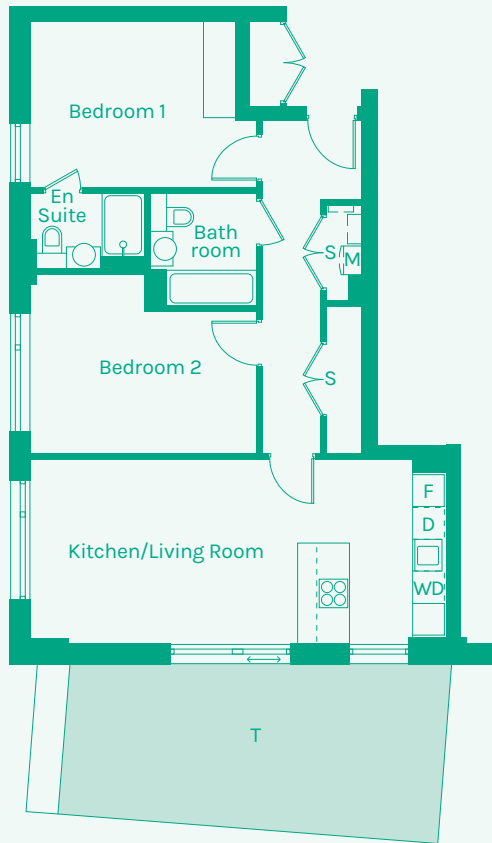
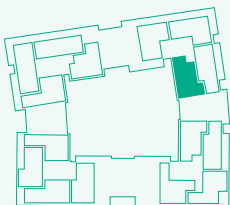




**NEW GARDEN QUARTER**  
STRATFORD E15



**TYPE 30**



Room	Metric	Imperial	Block	Floor	Plot
Kitchen/Living Room	7.82 x 3.49m	25'8" x 11'5"	F	6	199
Hall	1.11 x 6.21m	3'8" x 20'4"			
Bathroom	2.00 x 2.15m	6'7" x 7'1"			
Bedroom 1	3.86 x 3.09m	12'8" x 10'2"			
Bedroom 2	4.21 x 2.67m	13'10" x 8'9"			
Ensuite	2.09 x 1.43m	6'10" x 4'8"			
<b>GIA</b>	<b>74.70m<sup>2</sup></b>	<b>804 sq ft</b>			

- B // Balcony
- D // Dishwasher
- F // Fridge Freezer
- M // Mechanical Extract Ventilation Unit
- S // Storage
- T // Terrace
- W // Wardrobe
- WD // Washer / Dryer

These plans are to be used as a guide only to the apartment types available.

