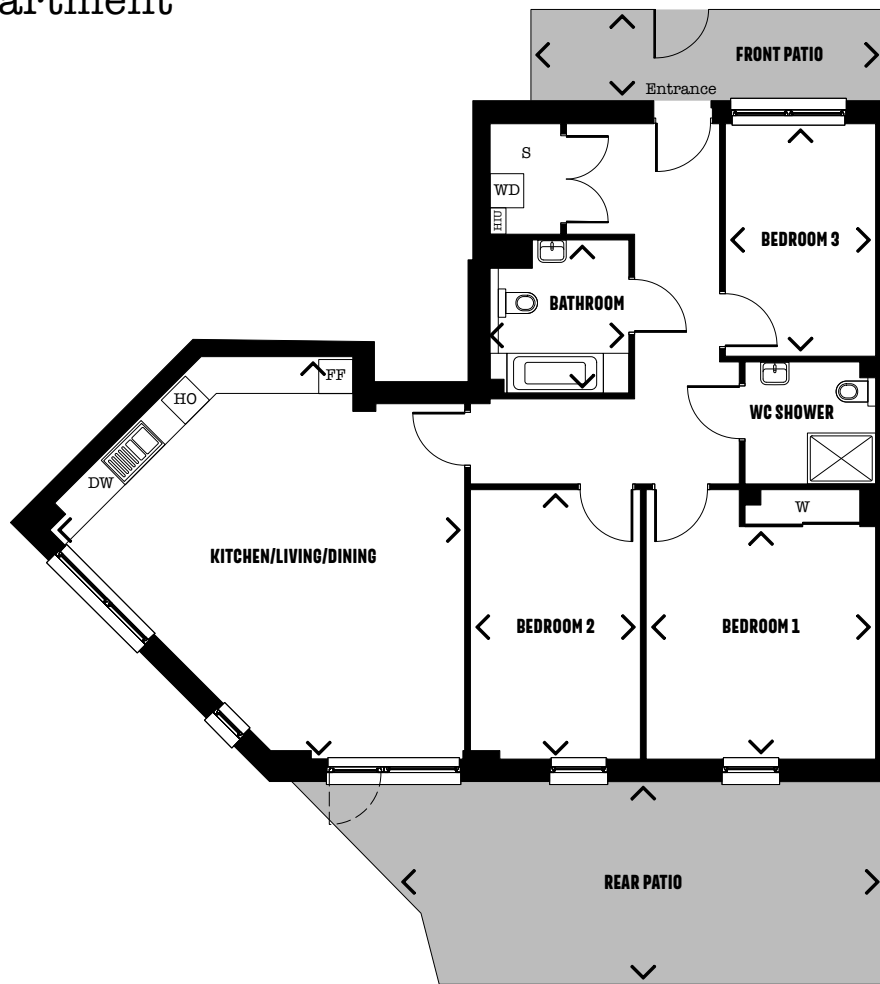


# Type 25

## 3 bedroom apartment (Adaptable)



### DIMENSIONS

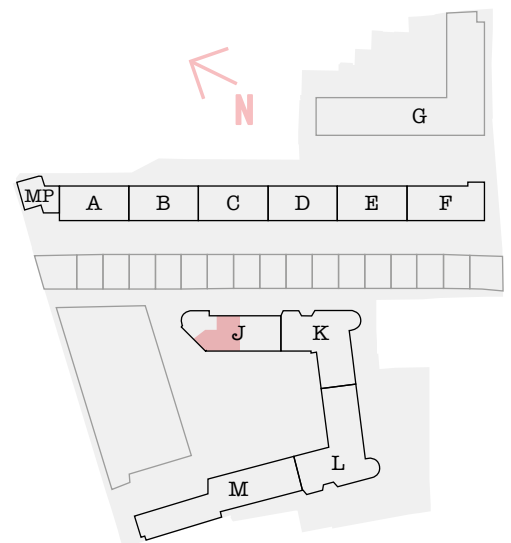
ROOM	METRIC	IMPERIAL
Kitchen/Living/Dining	7.24m x 7.09m	23'9" x 23'3"
Bedroom 1	4.75m x 4.04m	15'7" x 13'3"
Bedroom 2	4.75m x 3.00m	15'7" x 9'10"
Bedroom 3	4.10m x 2.65m	13'6" x 8'8"
Bathroom	2.70m x 2.45m	8'10" x 8'0"
<b>TOTAL AREA</b>	<b>117.51 SQ M</b>	<b>1265 SQ FT</b>
Front Patio	6.23m x 1.61m	20'5" x 5'3"
Rear Patio	8.65m x 4.57m	28'4" x 11'9"

### PLOT LOCATOR

**BLOCK**  
J

**FLOOR**  
G

**PLOT**  
J01



### FLOORPLAN KEY

<b>HO</b> Hob	<b>DW</b> Dishwasher	<b>HIU</b> Heat Interface Unit	<b>S</b> Store
<b>WD</b> Washer/Dryer	<b>FF</b> Fridge Freezer	<b>W</b> Wardrobe	