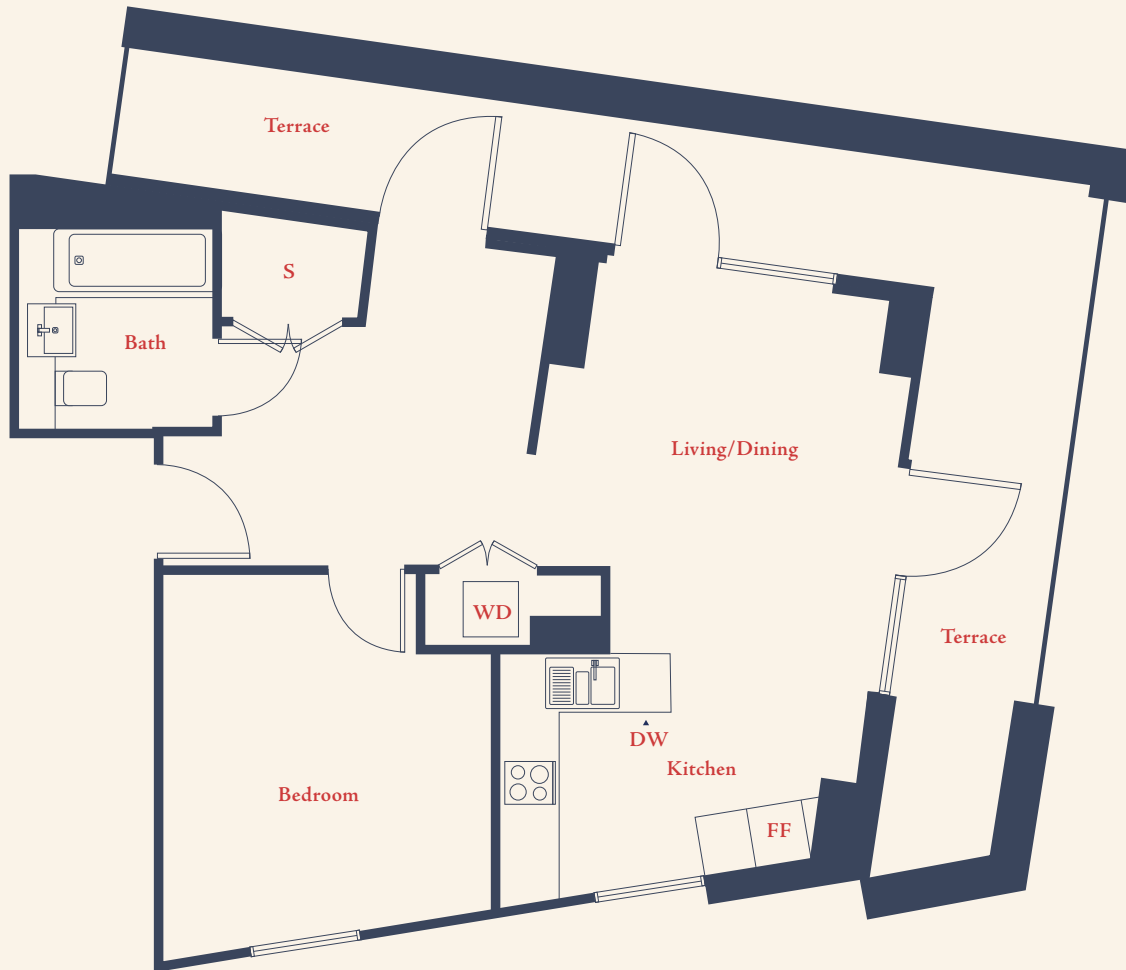


1 BEDROOM APARTMENT

Flat 101, Laker Court, 39 Harbour Way, London, E14 9ZE

Gross internal floor Area 637.2ft² 59.2m²

- Bath – Bathroom
- WD – Washer/dryer
- DW – Dishwasher
- FF – Fridge freezer
- S – Storage



Level 1

	METRES	FEET/INCHES
Living/Dining	3.7 x 3.92	12'1" x 12'8"
Kitchen	3.89 x 2.83	12'7" x 9'2"
Bathroom	2.15 x 2.1	7'0" x 6'8"
Bedroom	3.9 x 3.55	12'7" x 11'6"
Terrace	22.5m ²	242.1ft ²

