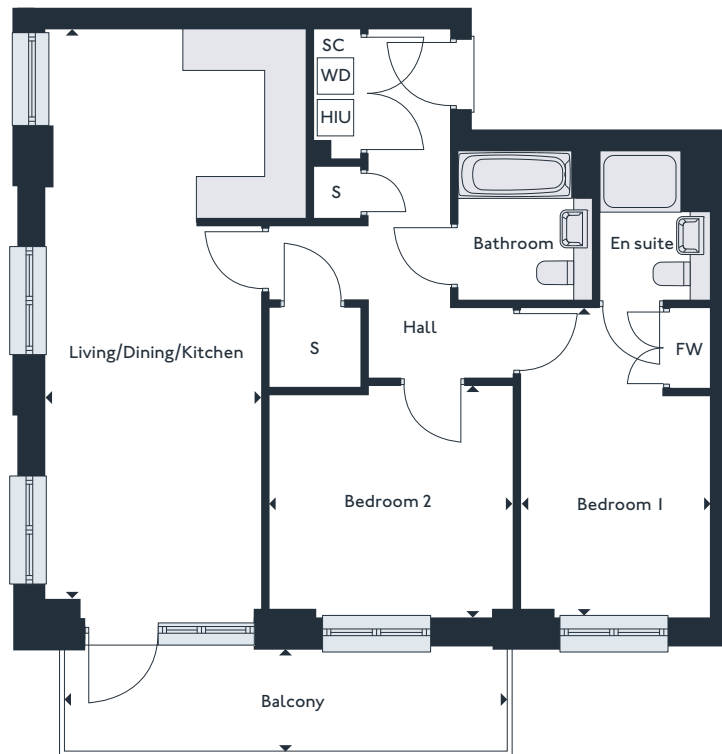


Two bedroom apartments

APARTMENT

| | | | | |
|----|-----|-----|-----|-----|
| 4* | 10* | 16* | 22* | 28* |
| 7 | 13 | 19 | 25 | 31 |



| | | |
|----------------------------|---------------------------|-------------------|
| Living/Dining/Kitchen | 3.7m x 8.4m | 12'3" x 27'6" |
| Bedroom 1 | 2.8m x 4.6m | 9'2" x 15'0" |
| Bedroom 2 | 3.6m x 3.4m | 11'10" x 11'3" |
| Balcony | 6.5m x 1.6m | 21'5" x 5'2" |
| Gross internal area | 77.4 m² | 833.1 sqft |

SC - Services Cupboard S - Storage FW - Fitted Wardrobe
 WD - Washer Dryer HIU - Heat Interface Unit

*Handed to layout shown