

Parkside

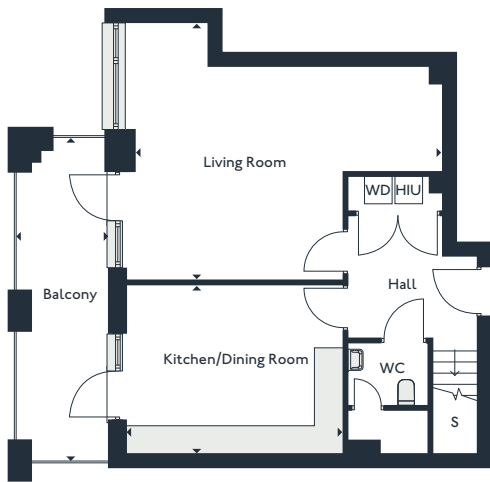
Three bedroom duplex apartments

GEORGE COURT

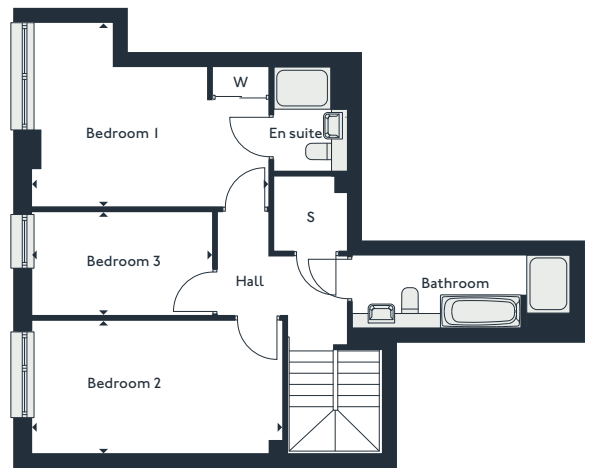
54 | 49*



ENTRANCE LEVEL



UPPER LEVEL



Seventh floor

| | | |
|---------------------|-------------|---------------|
| Living Room | 6.5m x 5.4m | 21'2" x 17'9" |
| Kitchen/Dining Room | 4.6m x 3.6m | 15'0" x 11'8" |
| Balcony | 1.9m x 6.8m | 6'4" x 22'3" |

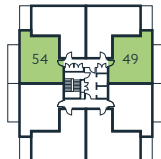
S - Storage
 W - Wardrobe
 WD - Washer Dryer
 HIU - Heat Interface Unit



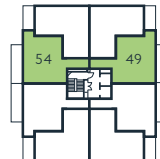
Eighth floor

| | | |
|-----------|-------------|---------------|
| Bedroom 1 | 5m x 3.9m | 16'5" x 12'9" |
| Bedroom 2 | 5.3m x 2.8m | 17'5" x 9'2" |
| Bedroom 3 | 3.8m x 2.2m | 12'6" x 7'3" |

Gross internal area **123.3 m²** **1327 sqft**



Seventh floor



Eighth floor

PARK



THE ROYAL DOCKS

www.royalalbertwharf.com

*Handed to floorplan shown. Layouts shown here are for approximate measurements only. They are not necessarily shown to scale. Exact layout and sizes of properties may vary. Please speak to a Sales Advisor for exact details.