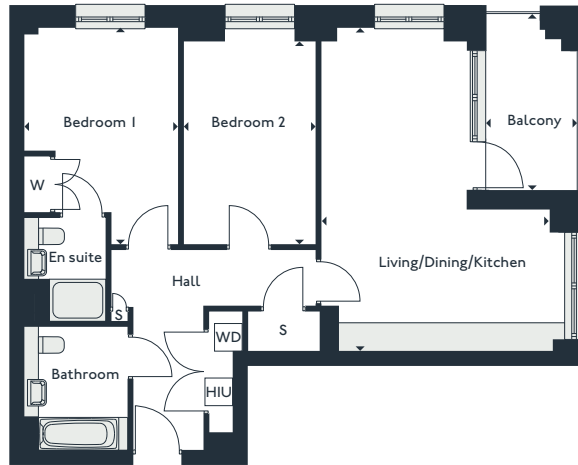


Parkside


Two bedroom apartments

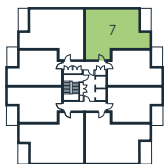
GEORGE COURT

7 | 15 | 23 | 31 | 39 | 47

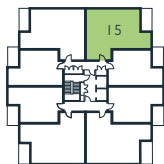


Living/Dining/Kitchen	4.8m x 6.8m	15'10" x 22'4"
Bedroom 1	3.3m x 4.6m	10'9" x 15'0"
Bedroom 2	2.8m x 4.3m	9'2" x 14'1"
Balcony	1.9m x 3.7m	6'4" x 12'3"
Gross internal area	77.9 m²	839 sqft

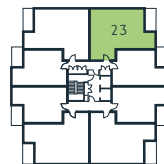
S - Storage
 W - Wardrobe
 WD - Washer Dryer
 HIU - Heat Interface Unit
 - Wheelchair accessible apartment



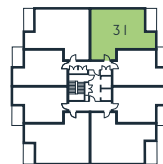
First floor



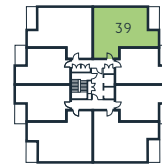
Second floor



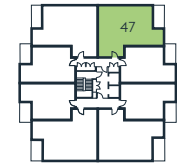
Third floor



Fourth floor



Fifth floor



Sixth floor

PARK



THE ROYAL DOCKS

www.royalalbertwharf.com

*Handed to floorplan shown. Layouts shown here are for approximate measurements only. They are not necessarily shown to scale. Exact layout and sizes of properties may vary. Please speak to a Sales Advisor for exact details.