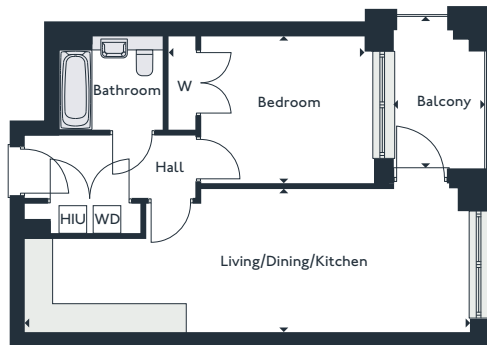


Parkside

One bedroom apartments

GEORGE COURT

5'	13'	21'	29'	37'	45'
8	16	24	32	40	48



Living/Dining/Kitchen	9.4m x 3m	30'10" x 9'11"
Bedroom	4.2m x 3.1m	13'8" x 10'3"
Balcony	1.9m x 3.2m	6'4" x 10'6"
Gross internal area	50.9 m²	548 sqft

W - Wardrobe
 WD - Washer Dryer
 HIU - Heat Interface Unit



THE ROYAL DOCKS

www.royalalbertwharf.com

*Handed to floorplan shown. Layouts shown here are for approximate measurements only. They are not necessarily shown to scale. Exact layout and sizes of properties may vary. Please speak to a Sales Advisor for exact details.