

Parkside

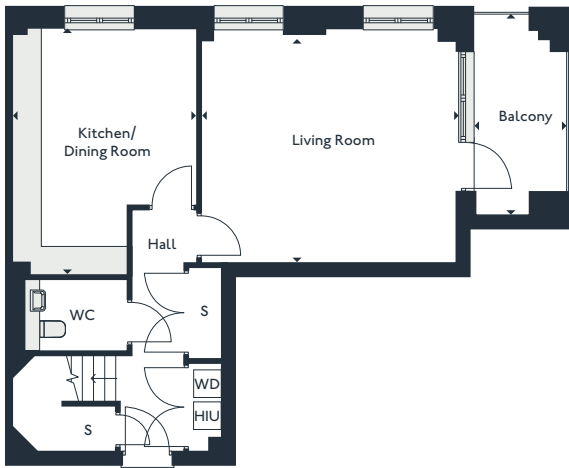
Three bedroom duplex apartments

GEORGE COURT

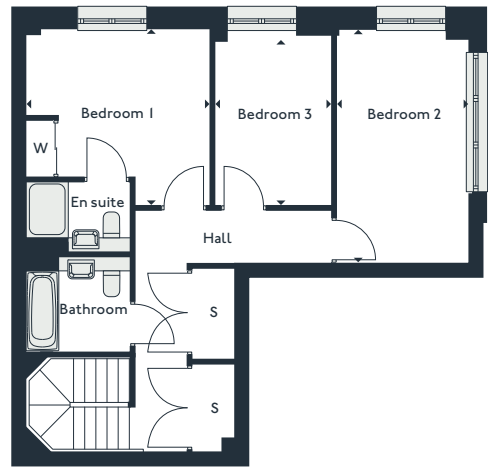
55' | 56



ENTRANCE LEVEL



UPPER LEVEL



Seventh floor

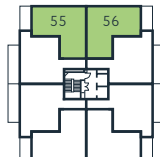
Living Room	5.4m x 4.9m	17'7" x 16'2"
Kitchen/Dining Room	3.9m x 5.2m	12'9" x 17'1"
Balcony	1.9m x 4.2m	6'4" x 13'10"

S - Storage
 W - Wardrobe
 WD - Washer Dryer
 HIU - Heat Interface Unit

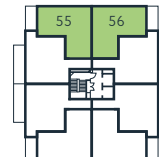
Eighth floor

Bedroom 1	3.9m x 3.7m	12'9" x 12'2"
Bedroom 2	2.8m x 4.9m	9'2" x 16'2"
Bedroom 3	2.5m x 3.6m	8'1" x 11'9"

Gross internal area **126.5m²** **1362 sqft**



Seventh floor



Eighth floor

PARK



THE ROYAL DOCKS

www.royalalbertwharf.com

*Handed to floorplan shown. Layouts shown here are for approximate measurements only. They are not necessarily shown to scale. Exact layout and sizes of properties may vary. Please speak to a Sales Advisor for exact details.