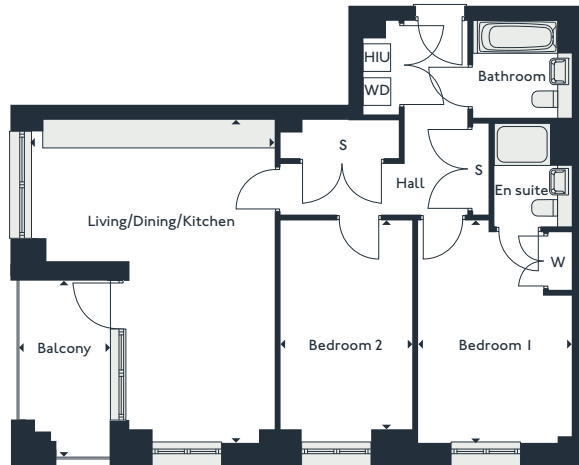


# Parkside

## Two bedroom apartments

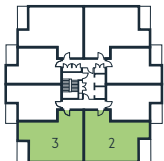
GEORGE COURT

2' | 10' | 18' | 26' | 34' | 42'  
 3 | 11 | 19 | 27 | 35 | 43

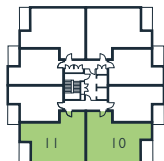


Living/Dining/Kitchen	4.9m x 6.8m	16'1" x 22'4"
Bedroom 1	3.3m x 4.7m	10'8" x 15'5"
Bedroom 2	2.8m x 4.4m	9'2" x 14'6"
Balcony	1.9m x 3.7m	6'4" x 12'3"
<b>Gross internal area</b>	<b>78.4 m<sup>2</sup></b>	<b>844 sqft</b>

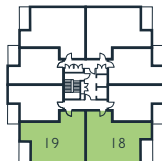
S - Storage  
 W - Wardrobe  
 WD - Washer Dryer  
 HIU - Heat Interface Unit



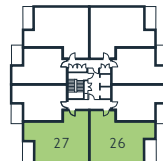
First floor



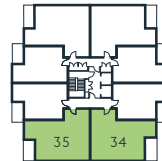
Second floor



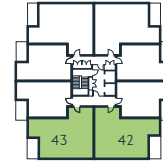
Third floor



Fourth floor



Fifth floor



Sixth floor

PARK

**ROYAL  
 ALBERT  
 WHARF**

THE ROYAL DOCKS

[www.royalalbertwharf.com](http://www.royalalbertwharf.com)

\*Handed to floorplan shown. Layouts shown here are for approximate measurements only. They are not necessarily shown to scale. Exact layout and sizes of properties may vary. Please speak to a Sales Advisor for exact details.