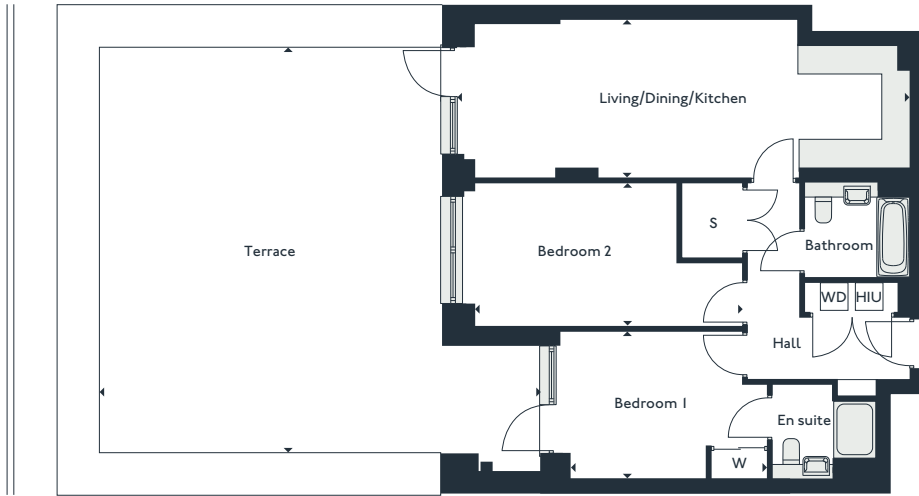


# Parkside

## Two bedroom apartment

GUTHRUM COURT

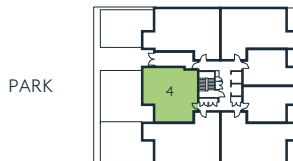
4



### Second floor

Living/Dining/Kitchen	9.2m x 3.3m	30'2" x 11'0"
Bedroom 1	4.2m x 3.1m	13'8" x 10'3"
Bedroom 2	5.7m x 3m	18'7" x 9'11"
Terrace	9.3m x 8.6m	30'7" x 28'1"
<b>Gross internal area</b>	<b>80 m<sup>2</sup></b>	<b>861 sqft</b>

S - Storage  
 W - Wardrobe  
 WD - Washer Dryer  
 HIU - Heat Interface Unit



Second floor



THE ROYAL DOCKS

[www.royalalbertwharf.com](http://www.royalalbertwharf.com)

\*Handed to floorplan shown. Layouts shown here are for approximate measurements only. They are not necessarily shown to scale. Exact layout and sizes of properties may vary. Please speak to a Sales Advisor for exact details.