

Parkside

Three bedroom apartments

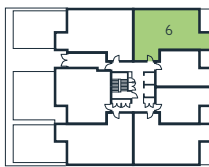
GUTHRUM COURT

6' | 21 | 30' | 45 | 54'
 13 | 22' | 37 | 46' |
 14' | 29 | 38' | 53

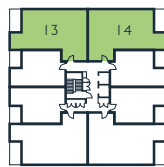


Living/Dining/Kitchen	6.4m x 6.6m	20'11" x 21'8"
Bedroom 1	2.8m x 5.2m	9'2" x 16'11"
Bedroom 2	3.1m x 4.2m	10'0" x 13'10"
Bedroom 3	2.4m x 4.2m	7'3" x 6'8"
Balcony	1.9m x 3.6m	6'4" x 12'11"
Gross internal area	91.5 m²	985 sqft

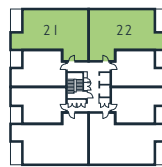
S - Storage
 W - Wardrobe
 WD - Washer Dryer
 HIU - Heat Interface Unit



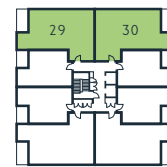
Second floor



Third floor

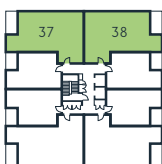


Fourth floor

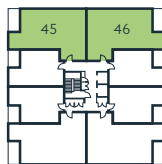


Fifth floor

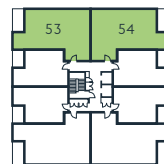
PARK



Sixth floor



Seventh floor



Eighth floor



THE ROYAL DOCKS

www.royalalbertwharf.com

*Handed to floorplan shown. Layouts shown here are for approximate measurements only. They are not necessarily shown to scale. Exact layout and sizes of properties may vary. Please speak to a Sales Advisor for exact details.