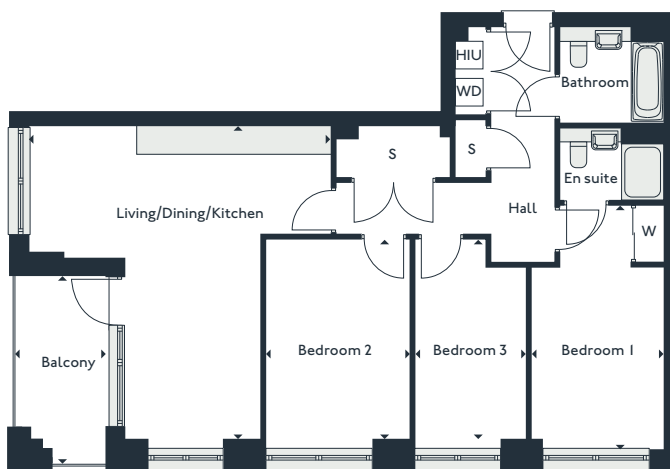


# Parkside

## Three bedroom apartments

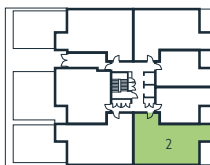
### GUTHRUM COURT

2'	17'	26	41'	50
9"	18	33"	42	
10	25"	34	49"	

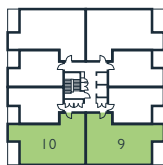


Living/Dining/Kitchen	6.4m x 6.6m	20'11" x 21'8"
Bedroom 1	2.8m x 5.2m	9'2" x 16'11"
Bedroom 2	3.1m x 4.2m	10'0" x 13'10"
Bedroom 3	2.4m x 4.2m	7'3" x 6'8"
Balcony	1.9m x 3.9m	6'4" x 12'11"
<b>Gross internal area</b>	<b>91.5 m<sup>2</sup></b>	<b>985 sqft</b>

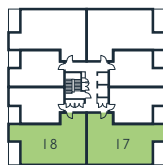
S - Storage  
W - Wardrobe  
WD - Washer Dryer  
HIU - Heat Interface Unit



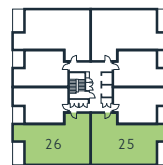
Second floor



Third floor

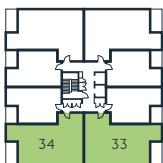


Fourth floor

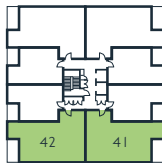


Fifth floor

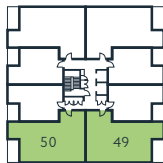
PARK



Sixth floor



Seventh floor



Eighth floor



THE ROYAL DOCKS

[www.royalalbertwharf.com](http://www.royalalbertwharf.com)

\*Handed to floorplan shown. Layouts shown here are for approximate measurements only. They are not necessarily shown to scale. Exact layout and sizes of properties may vary. Please speak to a Sales Advisor for exact details.