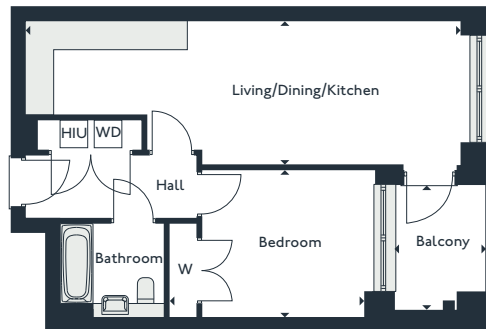


Parkside

One bedroom apartments

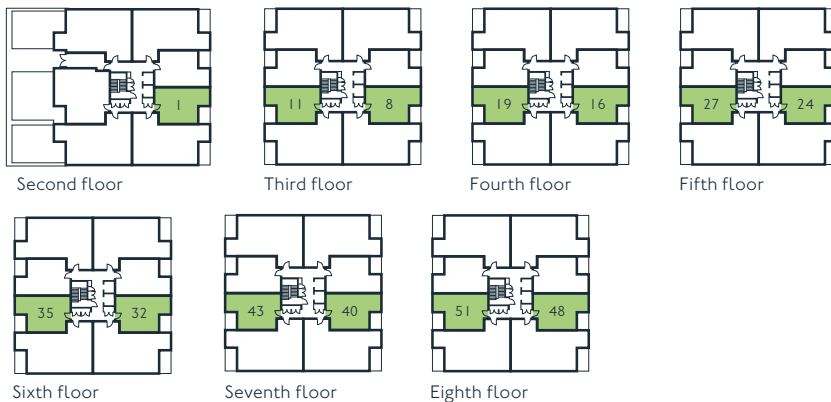
GUTHRUM COURT

1	16	27*	40	51*
8	19*	32	43*	
11*	24	35*	48	



Living/Dining/Kitchen	9.2m x 3m	30'2" x 9'11"
Bedroom	4.1m x 3.1m	13'7" x 10'3"
Balcony	1.9m x 2.6m	6'4" x 8'8"
Gross internal area	50.4 m²	543 sqft

W - Wardrobe
 WD - Washer Dryer
 HIU - Heat Interface Unit



PARK



THE ROYAL DOCKS

www.royalalbertwharf.com

*Handed to floorplan shown. Layouts shown here are for approximate measurements only. They are not necessarily shown to scale. Exact layout and sizes of properties may vary. Please speak to a Sales Advisor for exact details.