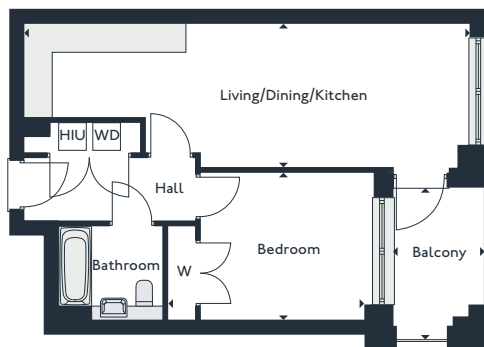


Parkside

One bedroom apartments

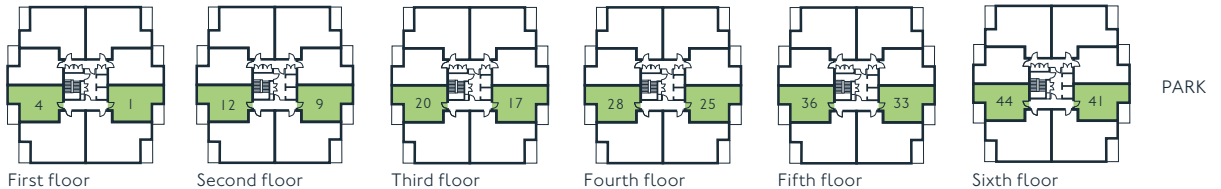
GEORGE COURT

| | | | | | |
|----|-----|-----|-----|-----|-----|
| 1 | 9 | 17 | 25 | 33 | 41 |
| 4' | 12' | 20' | 28' | 36' | 44' |



| | | |
|----------------------------|---------------------------|-----------------|
| Living/Dining/Kitchen | 9.4m x 3m | 30'10" x 9'11" |
| Bedroom | 4.2m x 3.1m | 13'8" x 10'3" |
| Balcony | 1.9m x 3.2m | 6'4" x 10'6" |
| Gross internal area | 50.9 m² | 548 sqft |

W - Wardrobe
 WD - Washer Dryer
 HIU - Heat Interface Unit



THE ROYAL DOCKS

www.royalalbertwharf.com

*Handed to floorplan shown. Layouts shown here are for approximate measurements only. They are not necessarily shown to scale. Exact layout and sizes of properties may vary. Please speak to a Sales Advisor for exact details.