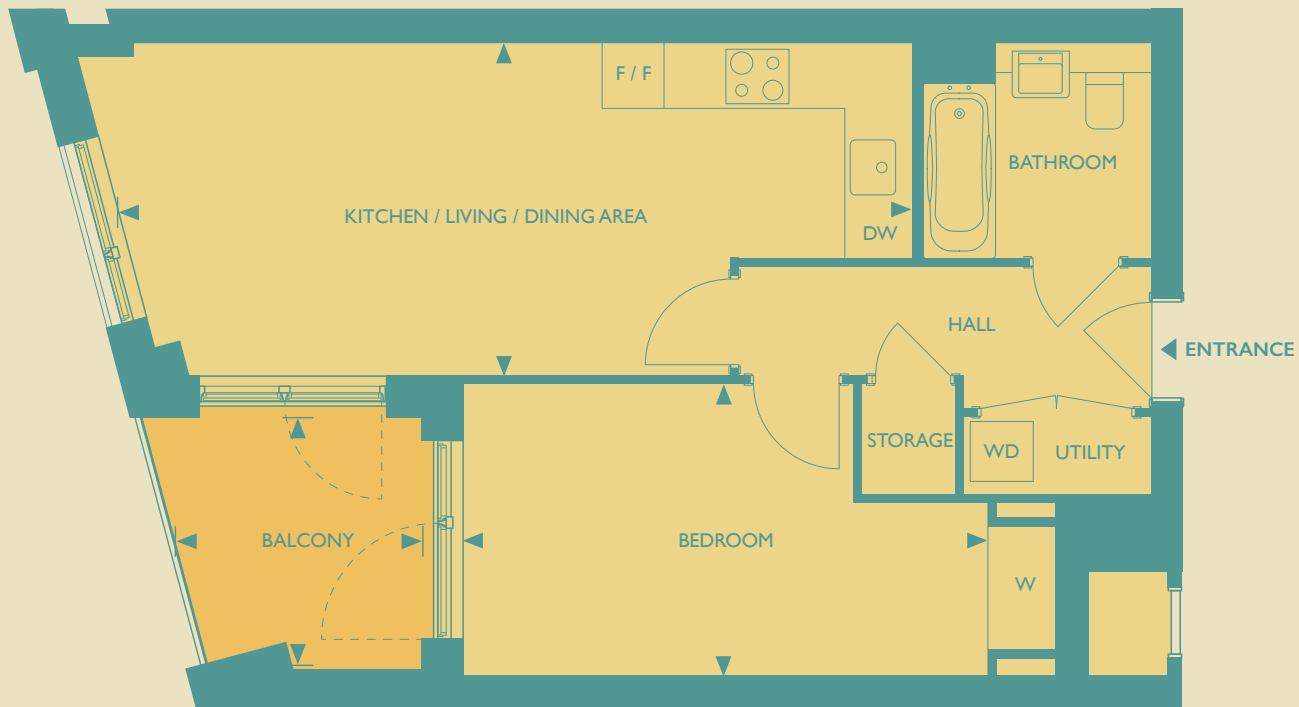




GALYON POINT

1 BEDROOM APARTMENT
Apartments 2, 10 & 18



KITCHEN/LIVING/DINING AREA

7.70m x 3.20m
25'3" x 10'7"

BEDROOM

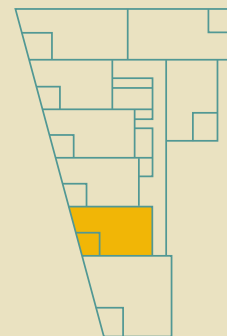
5.10m x 2.80m
16'7" x 9'2"

GROSS INTERNAL AREA

50.0 sq. m.
538 sq. ft.

BALCONY

2.40m x 2.40m
7'10" x 7'10"



| | |
|--------|--------------|
| APT 18 | THIRD FLOOR |
| APT 10 | SECOND FLOOR |
| APT 2 | FIRST FLOOR |

KEY: DW = DISHWASHER, F/F = FRIDGE FREEZER, W = WARDROBE, WD = WASHER DRYER

Heat interface unit (HIU) is located in storage or utility cupboards, please ask for more details. The floorplans depict a typical layout of this apartment type. For exact apartment specification, details of external and internal finishes, dimensions and floorplan differences, consult your Sales Executive. Any areas, measurements or distances quoted are approximate only and should not be used when ordering floor coverings or furnishings. Floorplans are not shown to scale. January 2022.