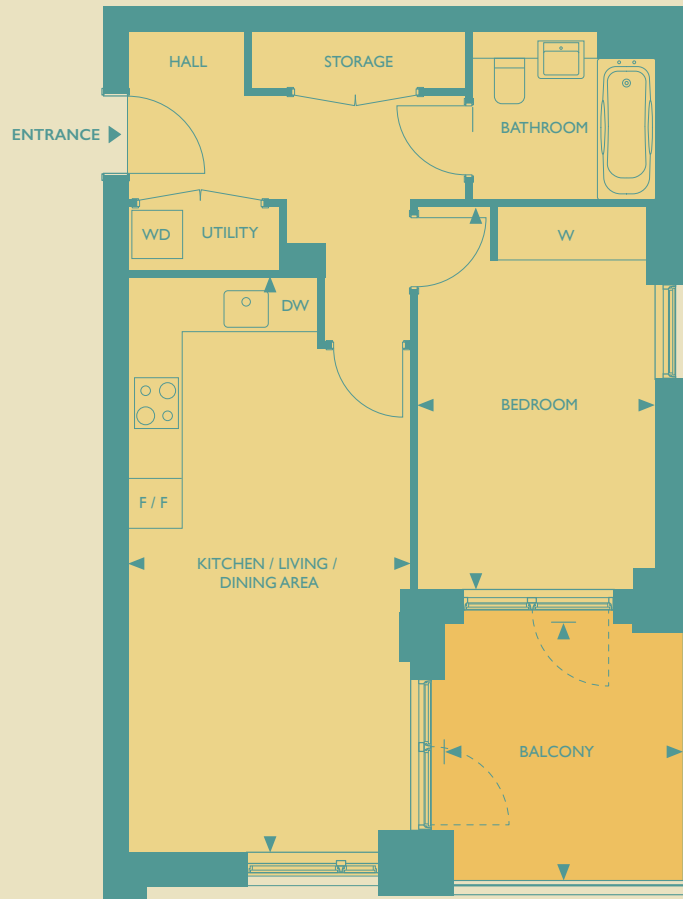




GALYON POINT

1 BEDROOM APARTMENT
Apartments 8, 16 & 24



KITCHEN/LIVING/DINING AREA

6.90m x 3.40m
22'7" x 11'2"

GROSS INTERNAL AREA

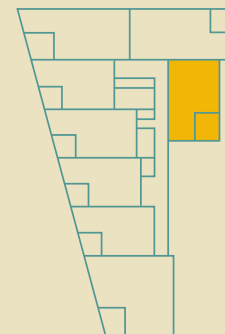
52.6 sq. m.
566 sq. ft.

BEDROOM

4.60m x 2.80m
15'1" x 9'4"

BALCONY

3.10m x 2.90m
10'2" x 9'5"



- APT 24 THIRD FLOOR
- APT 16 SECOND FLOOR
- APT 8 FIRST FLOOR

KEY: DW = DISHWASHER, F/F = FRIDGE FREEZER, W = WARDROBE, WD = WASHER DRYER

Heat interface unit (HIU) is located in storage or utility cupboards, please ask for more details. The floorplans depict a typical layout of this apartment type. For exact apartment specification, details of external and internal finishes, dimensions and floorplan differences, consult your Sales Executive. Any areas, measurements or distances quoted are approximate only and should not be used when ordering floor coverings or furnishings. Floorplans are not shown to scale. January 2022.