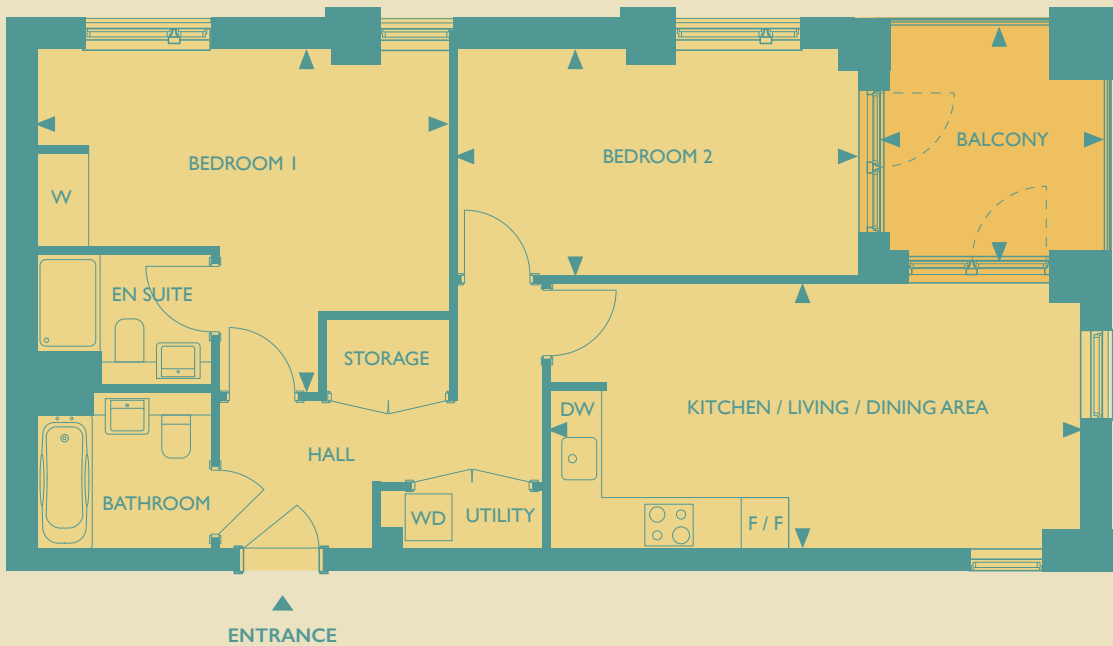




# GALYON POINT

2 BEDROOM APARTMENT  
Apartments 7, 15 & 23



## KITCHEN/LIVING/DINING AREA

6.70m x 3.40m  
22'0" x 11'0"

## BEDROOM 1

5.20m x 4.30m  
17'1" x 14'3"

## BEDROOM 2

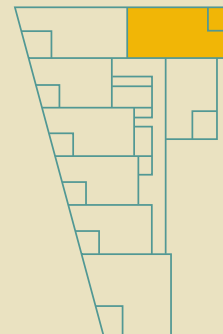
5.10m x 2.80m  
16'7" x 9'4"

## GROSS INTERNAL AREA

74.0 sq. m.  
796 sq. ft.

## BALCONY

2.90m x 2.80m  
9'5" x 9'1"



APT 23	THIRD FLOOR
APT 15	SECOND FLOOR
APT 7	FIRST FLOOR

**KEY:** DW = DISHWASHER, F/F = FRIDGE FREEZER, W = WARDROBE, WD = WASHER DRYER

Heat interface unit (HIU) is located in storage or utility cupboards, please ask for more details. The floorplans depict a typical layout of this apartment type. For exact apartment specification, details of external and internal finishes, dimensions and floorplan differences, consult your Sales Executive. Any areas, measurements or distances quoted are approximate only and should not be used when ordering floor coverings or furnishings. Floorplans are not shown to scale. June 2022.