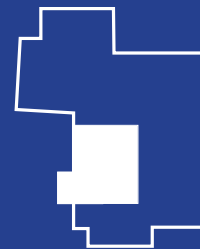
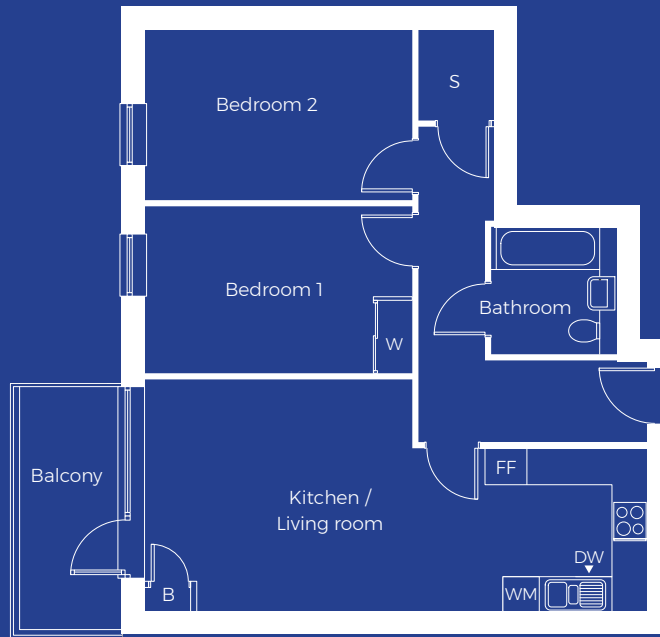


10 BLOSSOM HOUSE, 5 RESERVOIR WAY

**2
BED**



1ST FLOOR

	Imperial	Metric
Kitchen / Living room	27'4" x 12'8"	8.34m x 3.85m
Bedroom 1	14'7" x 9'0"	4.44m x 2.75m
Bedroom 2	14'7" x 9'4"	4.44m x 2.85m
Bathroom	6'11" x 6'11"	2.10m x 2.10m
Gross Internal Area	762sqft	70.8sqm
Balcony	13'1" x 5'5"	4.00m x 1.65m

- FF - **Fridge Freezer**
- WM - **Washer/dryer**
- DW - **Dishwasher**
- S - **Storage**
- W - **Wardrobe**
- B - **Boiler**